

J. OPERATING INSTRUCTIONS

Lighting Instructions for Standing Pilot

FOR YOUR SAFETY READ BEFORE LIGHTING THE STANDING PILOT.

WARNING!

If you do not follow these instructions exactly, a fire or explosion may result causing property damage, personal injury or loss of life.

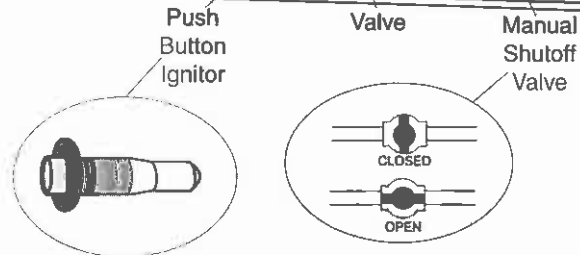
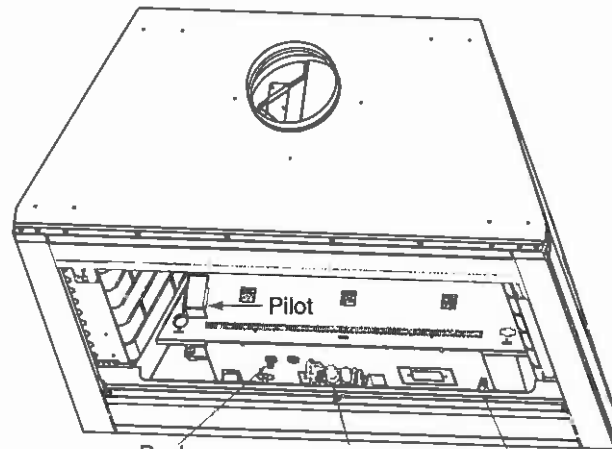
- A. This appliance has a pilot which must be lighted by hand. When lighting the pilot, follow these instructions exactly.
- B. BEFORE LIGHTING smell all around the appliance area for gas. Be sure to smell next to the floor because some gas is heavier than air and will settle on the floor.
- WHAT TO DO IF YOU SMELL GAS
 - Do not try to light any appliance.
 - Do not touch any electric switch; do not use any phone in your building.
 - Immediately call your gas supplier from a neighbor's phone. Follow the supplier's instructions.
- C. Use only your hand to push in or turn knob. Never use tools. If the knob will not push in or turn by hand, don't try to repair it; call a qualified service technician. Forced or attempted repair may result in a fire or explosion.
- D. Do not use this appliance if any part has been under water. Immediately call a qualified service technician to inspect the appliance and to replace any part of the control system and any gas control which has been under water.

LIGHTING INSTRUCTIONS

STOP! READ THE SAFETY INFORMATION ABOVE ON THIS LABEL!

1. Turn wall switch to the "OFF" position or set thermostat to lowest setting.
2. Open the control access panel.
3. Turn manual shutoff valve to "CLOSED". Wait 5 minutes to clear out any gas. Then smell for gas, including near the floor. If you smell gas, STOP! Follow "B" in the safety information above on this label. If you don't smell gas, go to the next step.
4. Turn manual shutoff valve to "OPEN".
5. Turn pilot knob clockwise to "OFF". Knob may have to be depressed to pass the "PILOT" position.
6. Locate pilot assembly inside appliance.
Locate red ignitor button.
Turn pilot knob to "PILOT" and push in.
9. Continue to hold in pilot knob and push the red ignitor button 12-15 times until small blue pilot flame appears.
10. Continue to hold in pilot knob for approximately one minute. Pilot should remain lit. If pilot goes out, wait 5 minutes and repeat Steps 4-9.
11. To light the main burner, release and turn knob counterclockwise to "ON". If the appliance is connected to a wall switch, turn it to "ON". Do not light by hand.

If the appliance will not operate, follow the instructions "To Turn Off Gas To Appliance" and call your service technician or gas supplier.



TO TURN OFF THE GAS TO THE APPLIANCE

1. Turn off the wall switch.
2. Open the control access panel.
3. Turn manual shutoff valve to CLOSED position. Do not force.
4. Close control access panel.

K. SEASONAL CHECK LIST

WARNING!

Children and adults should be alerted to the hazards of high surface temperatures and should stay away to avoid burns or clothing ignition. Young children should be carefully supervised when they are in the same room as the appliance.

CAUTION:

Any safety screen or guard removed for servicing an appliance must be replaced prior to operating this appliance. Clothing or other flammable material should not be placed on or near the appliance.

Installation and repair should be done by a qualified service person. The appliance should be inspected before use and at least annually by a qualified service person. More frequent cleaning may be required due to excessive lint from carpeting, bedding material, etc. It is imperative that control compartments, burners and circulating air passageways of the appliance be kept clean.

1. Glass Doors

Most efficient fireplace operation using glass doors is with the doors open. Only Hearth Technologies Inc. (HTI) glass doors may be used on the ODY42 Series fireplace.

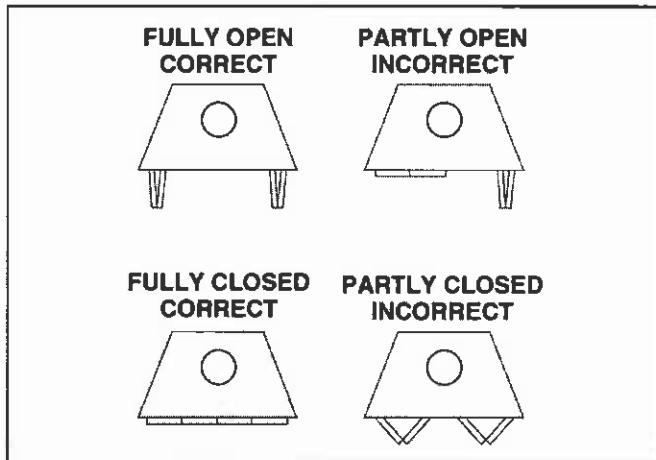


Figure 31
Recommended Operating Positions of Doors

2. Negative Air Pressure Within the Structure

This fireplace will operate correctly only if adequate ventilation is provided to allow proper draft to the fireplace system. Hearth Technologies Inc. assumes no responsibility for the improper performance of the fireplace system caused by inadequate draft due to environmental conditions, down drafts, tight sea' construction of the structure, or mechanical exhaust devices which create a negative air pressure within the structure where the fireplace is located.

3. Outside Air

A damper control handle allows individual control of the outside air inlets if your fireplace is equipped with this option. Use of outside air for combustion is highly recommended to conserve heated air within the structure and to provide make up air to keep the fireplace venting properly.

4. Before operating this appliance, have a qualified technician:

- Review proper placement of logs, rock wool and vermiculite.
- Check wiring.
- Check air shutter adjustment.
- Ensure there are no gas leaks.
- Ensure the glass is sealed and in proper position.
- Ensure the flow of combustion and ventilation air is not obstructed.

WARNING!

Fireplaces equipped with doors should be operated only with doors fully open or fully closed. If doors are left partially open, gas and flame may be drawn out of the fireplace opening, creating the risk of fire, smoke, or carbon monoxide.

WARNING!

Keep the area near the appliance clear and free from combustible materials, gasoline and other flammable vapors and liquids.

5. Standing Pilot Operation

Hearth Technologies Inc. recommends you leave the pilot on year round.

Lighting the Fireplace During Regular Use. Turn the wall switch to "ON".

Shutdown During Regular Use. Turn the wall switch to "OFF".

If you decide to shut down the appliance for a long period of time:

- a. Turn all wall switches to "OFF".
- b. Turn pilot knob on valve to "OFF".
- c. Turn the manual shutoff valve to "CLOSED".
- d. To relight the standing pilot and appliance, see page 25.

6. Fuel

Do not burn wood or other material in this fireplace. The ODYCKW Conversion Kit is available to convert this fireplace to burn solid fuel (wood).

WARNING!

Do not use this appliance if any part has been under water. Immediately call a qualified service technician to inspect the appliance and to replace any part of the control system and any gas control which has been under water.

L. START-UP ISSUES

| Cause | Possible Solution |
|---------------------------|---|
| 1. Condensation on glass. | This is a result of gas combustion and temperature variations. As the fireplace warms, this condensation should disappear. |
| 2. Blue flames. | This is a result of normal operation and the flames will begin to yellow as the fireplace is allowed to burn. |
| 3. Odor from fireplace. | When first operated, this fireplace may release an odor for the first several hours. This is caused by the curing of the paint and the burning off of any oils remaining from manufacturing. |
| 4. Film on the glass. | This is a normal result of the curing process of the paint and logs. Glass should be cleaned within 4-6 hours of the initial burning to remove deposits left by oils from the manufacturing process. A nonabrasive cleaner such as Brasso may be necessary. |

WARNING!

Never use gasoline, gasoline-type lantern fuel, kerosene, charcoal lighter fluid or similar liquids in this appliance. Keep any flammable liquids a safe distance from the appliance.

The first name in fireplaces

M. MAINTENANCE INSTRUCTIONS

1. Cleaning the Burner and Control Compartment

Keep the burner and control compartment clean by brushing and vacuuming at least once a year. Always turn off the wall switch (or remote control) and gas valve before cleaning.

2. Chimney Inspection

Visually inspect the chimney internally for obstructions and construction damage. Flue pipe joints and seams must be continuous and mechanically tight.

3. Checking Flame Patterns

- a. Check the flame pattern of the burner periodically, making sure the flames are steady, not lifting or floating. The flame color should be blue with yellow tips. See Figure 32. The thermopile and thermocouple tips should be covered with flame. See Figure 33.
- b. If the vent configuration is installed incorrectly, the vent may cause the flames inside the appliance to lift or "ghost" - a dangerous situation. Inspect the flames after installation to ensure proper performance. See Figure 32. If the vent configuration is correct, yet the flames are lifting or ghosting, shut off gas to the appliance and contact the dealer.

Note: The look of the flames and embers may differ based on the type of fuel and venting assembly that is used.

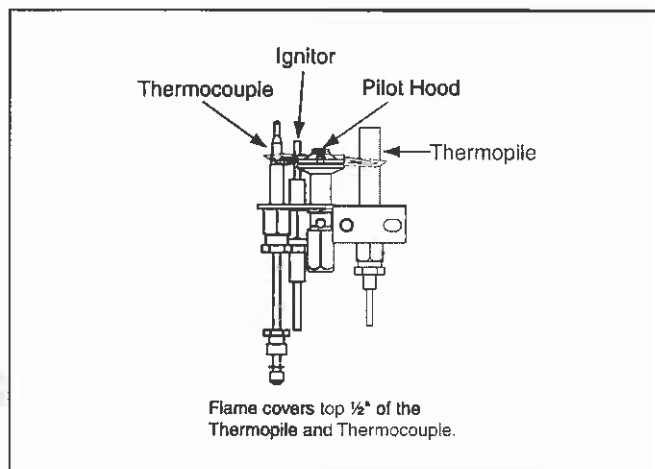


Figure 33 - Standing Pilot

- c. To prevent the possibility of soot buildup, we have provided your fireplace with an adjustable air shutter (two burners/two air shutters on the propane version). Your air shutter is provided in the "OPEN" position for natural gas and in the "OPEN" position for propane. In the event soot is accumulating in your fireplace, the air shutter should be checked to make sure it is fully open. This can be done by opening the control access panel, locating the adjustable air shutter and opening as far as necessary to eliminate as much soot as possible. See Figure 34.

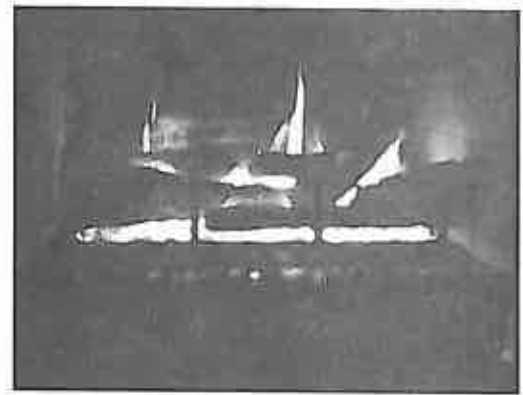


Figure 32 - Flame Patterns

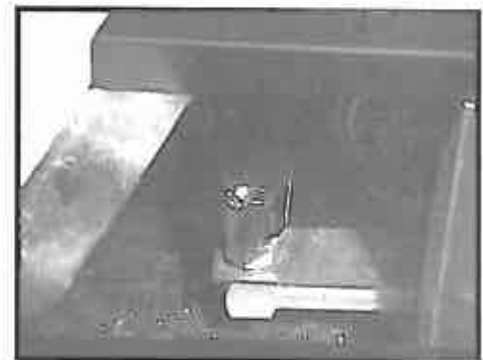


Figure 34 - Air Shutter

N. LOG REMOVAL/REPLACEMENT

1. Open the control access panel as shown in Figures 22 and 23 on page 21.
2. Remove the top right log. See Figure 35.
3. For removal of the grate/log assembly remove two screws (one per side) from the hearth pan. See Figure 36.
4. Lift up on the assembly to remove it from the fireplace and set it aside, being careful not to damage any of the logs. See Figure 37.
5. Reverse the order to reinstall the logs.

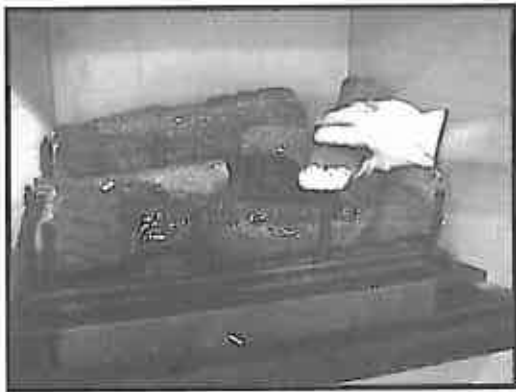


Figure 35
Removing the Top Right Log



Figure 36
Unscrewing the Log/Grate Assembly
from the Hearth Pan

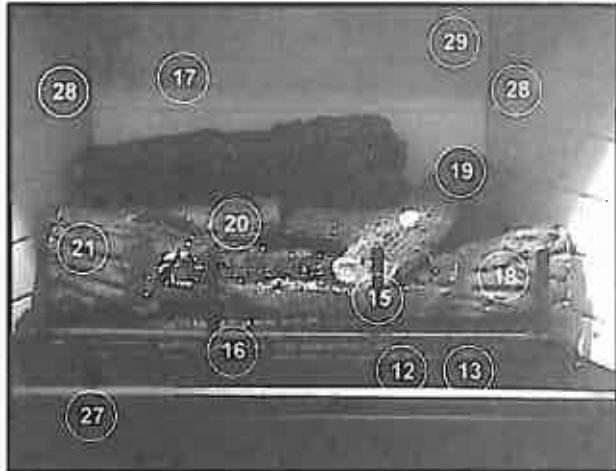


Figure 37
Log Removal

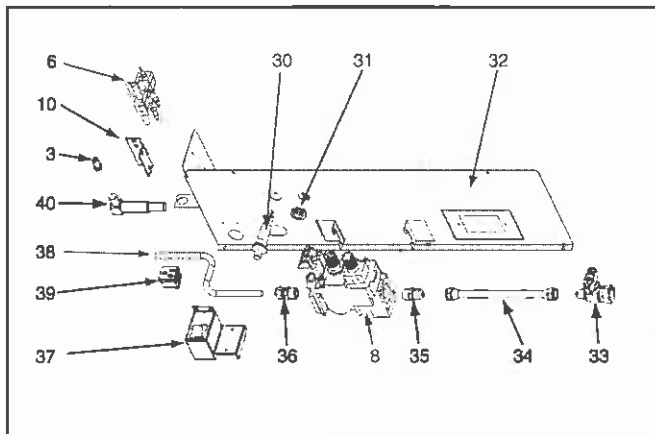
Visit our Website at www.heatilator.com for a dealer/distributor near you!

O. REPLACEMENT PARTS

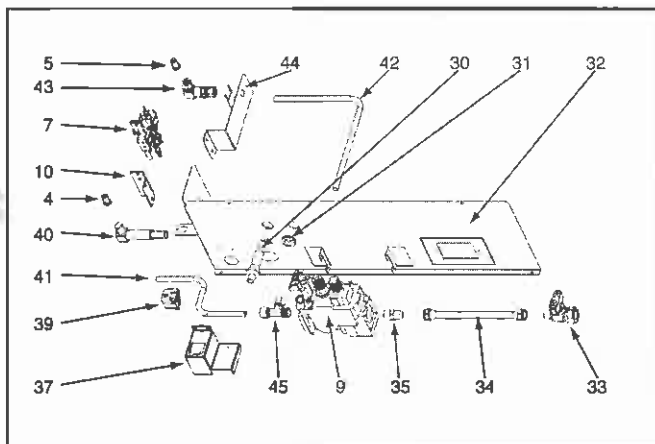
Replacement parts are available from your distributor/dealer.



ODY42 Burner/Grate/Log Assembly



N.G. Version



L.P. Version

| ITEM | PART # | DESCRIPTION | QTY. |
|------|--------|---|------|
| 1 | 31809 | Valve Assembly - N.G. | 1 |
| 2 | 31810 | Valve Assembly - L.P. | 1 |
| 3 | 31813 | Orifice - N.G. | 1 |
| 4 | 18678 | Orifice - L.P. - Front | 1 |
| 5 | 24005 | Orifice - L.P. - Rear | 1 |
| 6 | 25174 | Pilot Assembly - N.G. | 1 |
| 7 | 25175 | Pilot Assembly - L.P. | 1 |
| 8 | 29484 | Valve - N.G. | 1 |
| 9 | 29485 | Valve - L.P. | 1 |
| 10 | 31227 | Pilot Bracket | 1 |
| 11 | 31230 | Pilot Shield (not shown) | 1 |
| 12 | 30699 | Valve Cover | 1 |
| 13 | 31807 | Hearth Pan | 1 |
| 14 | 31820 | Hearth Assembly | 1 |
| 15 | 31907 | Grate/Log/Burner Assembly | 1 |
| 16 | 32460 | Hearth Log | 1 |
| 17 | 32461 | Back Log | 1 |
| 18 | 32462 | Right Front Log | 1 |
| 19 | 32463 | Right Top Log | 1 |
| 20 | 31801 | Left Middle Log | 1 |
| 21 | 31478 | Left Front Log | 1 |
| 22 | 32458 | Mineral Wool, Lava Rock, Vermiculite, and Fire Glow | 1 |
| 23 | 14333 | Mineral Wool | 1 |
| 24 | 28746 | Vermiculite | 1 |
| 25 | 28911 | Lava Rock | 1 |
| 26 | FIRE98 | Fire Glow | 1 |
| 27 | 30332 | Hearth Filler | 1 |
| 28 | 28393 | Side Refractory | 1 |
| 29 | 28394 | Back Refractory | 1 |
| 30 | 13416 | Push Button Ignitor | 1 |
| 31 | 25741 | Grommet | 1 |
| 32 | 31808 | Valve Plate | 1 |
| 33 | 15697 | On/Off Valve Assembly | 1 |
| 34 | 15696 | SS Flex Gas Line 10" | 1 |
| 35 | 17069 | Male Connector Brass - Flex | 1 |
| 36 | 13425 | Male Connector Brass - Tube | 1 |
| 37 | 31908 | Junction Box | 1 |
| 38 | 31815 | Gas Tube - N.G. | 1 |
| 39 | 26313 | Outlet w/Ground | 1 |
| 40 | 21352 | 90° Bulk Head Elbow | 1 |
| 41 | 30296 | Front Gas Tube - L.P. | 1 |
| 42 | 30666 | Rear Gas Tube - L.P. | 1 |
| 43 | 26457 | Bulkhead - L.P. | 1 |
| 44 | 30667 | Rear Bulkhead Bracket | 1 |
| 45 | 25059 | Brass T | 1 |

The first name in fireplaces

Index

A

Air Shutter 28

B

BTU's 22
Building Codes 2, 12

C

Chimney Air Kit 18
Chimney Height Requirements 14
Chimney Inspection 28
Chimney Requirements 12
Chimney Sections 7
 Assembling 16, 17
Chimney Sections Required 14
Chimney System
 Exit Point of the Roof 17
 Securing 17
Cleaning the Burner and Control Compartment 28
Codes 4, 14, 17, 22
 Building 2, 12
 Electric 23
Combustible Materials 10
Combustion Air 2
Constructing a Chase 19
Conversion Kit 2, 27

D

Damper 2, 18, 20
damper 2
Dimensions 6

E

Electric Codes 23

F

Fire Glow 24
Fireplace Locations 9
Firescreen 18
Firestop Spacers 16
Flame Patterns 28
Flue Damper 2
Framing 10
 J 27

G

Gas Conversions 22
Gas Line 21
Gas Pressure 22
Glass Doors 6, 18, 26
Grate 6

H

Hearth Extension
 Finishing Materials 18
 Positioning 18
Hearth Extensions 11
Hearth Strips 15
High Altitude Installation 21

I

Insulation Shield 16

J

Junction Box 22, 23
 Installation 22
 Wiring 23

L

Lava Rock 24
Leveling the Fireplace 15
Lighting Instructions 25
Locations 9
Log Set 24, 29

M

Maintenance 28
Mantel 12
Metal Hearth Strips 15
Minimum Clearance 18

N

Negative Air Pressure 26

O

Offset Chart 13
Offsets and Returns 12
Operating Instructions 25
Outside Air 9, 26
Outside Air Kit 2, 6, 9, 18

P

Positioning the Fireplace 15

R

Remote Controls 6
Replacement Parts 30
Rock Wool 24
Roof Flashing 18

S

Safety Precautions 2
Sealant Material 10
Seasonal Check List 26
Sidewalls/Surrounds 12
Space Requirements 9
Standing Pilot
 Operation 27
 Wiring 23
Start-up Issues 27
Surrounds 12
System Components 5

T

Ten Foot Rule 14
Termination Caps 8, 20

V

Vermiculite 24
Volume 2, 9

W

Wiring
 Junction Box 22, 23
 Standing Pilot 23
 Standing Pilot Ignition 23
Wood Conversion Kit 27

The first name in fireplaces

heatilator®

The first name in fireplaces

Gas Appliance (Fireplace) Limited Lifetime Warranty

HEARTH TECHNOLOGIES INC. ("HTI") extends the following warranty for HEATILATOR® gas appliances installed in the United States of America or Canada (the "Appliance"). Dealers and employees of HTI have no authority to make any warranty or authorize any remedies in addition to or inconsistent with the terms of this warranty.

Limited Lifetime Warranty.

HTI warrants the Appliance for component failure due to a manufacturing defect of any of the following components: combustion chamber, burner pan, and logs. The Limited Lifetime Warranty specified above is subject to the conditions, exclusions and limitations listed below, is for the period the Appliance is owned by the original homeowner only, and is nontransferable.

1 Year Limited Warranty.

HTI warrants the Appliance to be free from failure of any of the following components for a period of one year after installation: valve, flexible gas line connector, glass panel, fan, direct vent chimney components, factory paint, gasket, piezo ignitor, thermopile, thermocouple, junction box, pilot assembly, shutoff valve, high limit switch, refractory liners, transformer, and control box. If the Heatilator Appliance is found to be defective in either material or workmanship within one year of the date of original installation, HTI will provide replacement parts at no charge and pay reasonable labor and freight costs, and is for the period of one year following the date of original installation of the Appliance.

Conditions, Exclusions, & Limitations of Liability.

- A. Both the Limited Lifetime and 1 Year Limited Warranties supplied by HTI apply only while the Appliance is in its location of original installation. HTI's obligation under this warranty does not extend to damages resulting from (1) installation, operation or maintenance of the Appliance not in accordance with the Installation Instructions, Operating Instructions, and the Listing Agent Identification Label furnished with the Appliance; (2) installation which does not comply with local building codes; (3) shipping, improper handling, improper operation, abuse, misuse, accident or unworkmanlike repairs; (4) environmental conditions, inadequate ventilation or drafting caused by tight sealing construction of the structure, air handling devices such as exhaust fans or forced air furnaces, or other causes; (5) use of fuels other than those specified in the Operating Instructions; (6) installation or use of components not supplied with the Appliance or any other components not expressly authorized and approved by HTI; and/or (7) modification of the Appliance not expressly authorized and approved by HTI in writing. This warranty is limited to only the component parts manufactured or supplied by HTI.
- B. HTI's liability under both the Limited Lifetime Warranty and the 1 Year Limited Warranty is limited to the replacement and repair of defective components or workmanship during the applicable period. HTI may fully discharge all of its obligations under such warranties by repairing the defective component(s) or at HTI's discretion, providing replacement parts at no charge and paying reasonable labor and freight costs.
- C. **EXCEPT TO THE EXTENT PROVIDED BY LAW, HTI MAKES NO EXPRESS WARRANTIES OTHER THAN THE WARRANTY SPECIFIED HEREIN. THE DURATION OF ANY IMPLIED WARRANTY IS LIMITED TO DURATION OF THE WARRANTY SPECIFIED ABOVE.**
- D. Some states do not allow exclusions or limitations of incidental or consequential damages, so those limitations may not apply to you. This warranty gives you specific rights; you may also have other rights which vary from state to state.

How to Obtain Service.

To obtain service under this warranty you must:

1. Send written notice of the claimed condition to Heatilator Technical Service Department, Hearth Technologies Inc., 1915 W. Saunders Street, Mt. Pleasant, Iowa 52641-1563. You may also register your claim online at www.heatilator.com/contact.asp.
2. Provide proof of purchase, model number, serial number, and manufacturing date code to HTI.
3. Provide HTI reasonable opportunity to investigate the claim, including reasonable opportunity to inspect the Appliance prior to any repair or replacement work and before the Appliance or any component of the Appliance has been removed from the place of original installation.
4. Obtain HTI's consent to any warranty work before the work is done.

ADDITIONAL INFORMATION. If you would like information on current HEATILATOR products or want to locate a dealer in your area, call 1-800-843-2848.

©2001 Heatilator® is a Registered Trademark of Hearth Technologies Inc.