

CHECK CONDITION OF SHIPMENT

Upon receipt of this kit, check the condition of the packaging. Damage to the package should be noted on the carrier's freight receipt. Any damage claims as a result of shipping must be handled through the shipper. Travis Industries will provide assistance in resolving shipping claims or replacing items not included in the package. Please report any missing items immediately.

COMPATIBILITY (Freestanding models only)

- Lopi Patriot •Lopi Answer •Lopi Endeavor •Lopi Liberty •Avalon Cottage •Avalon Mission
- Avalon Pendleton (745/790) •Avalon Rainier (945/990) •Avalon Olympic (1190)
- Lopi Leyden •Avalon Arbor •1250 Wood Stove •1750 Wood Stove

PACKING LIST

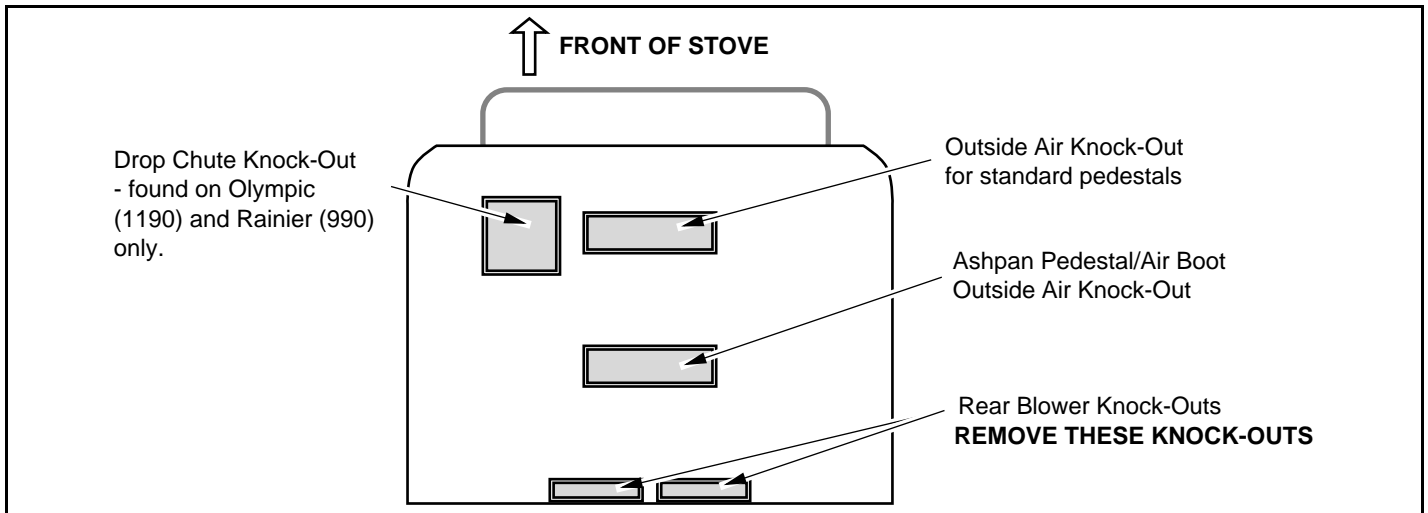
- Rear Blower •Snap Disk Assembly •Snap Disk Hanger •Three 1/4" 20 Thread Cutting Screws

REQUIRED TOOLS

- Large Screwdriver •3/8" Wrench or Socket Driver

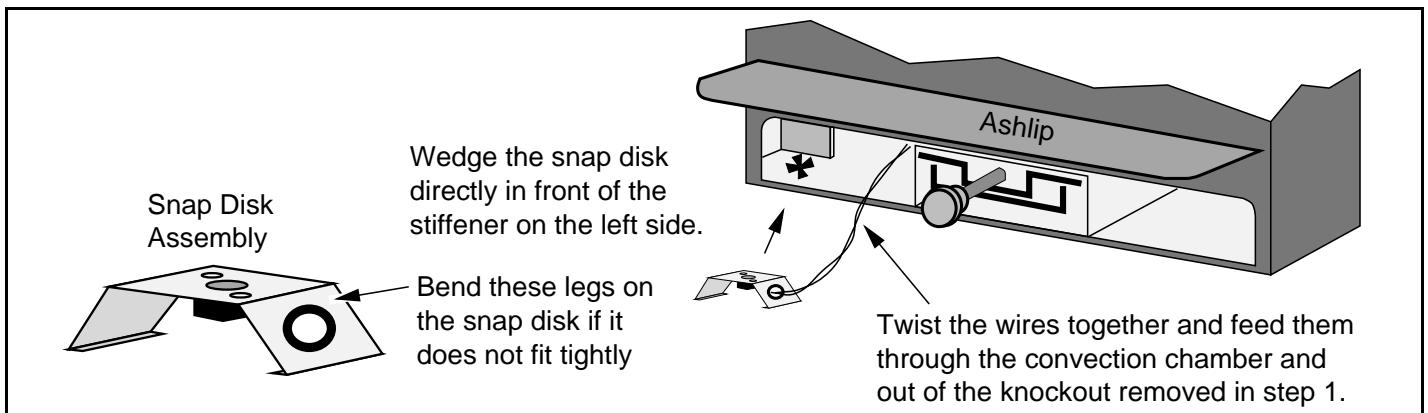
INSTALLATION INSTRUCTIONS (All Except Leyden / Arbor Wood Stove)

1. Install the stove legs or pedestal. Remove the two rear blower knock-outs underneath the base (see the illustration below).

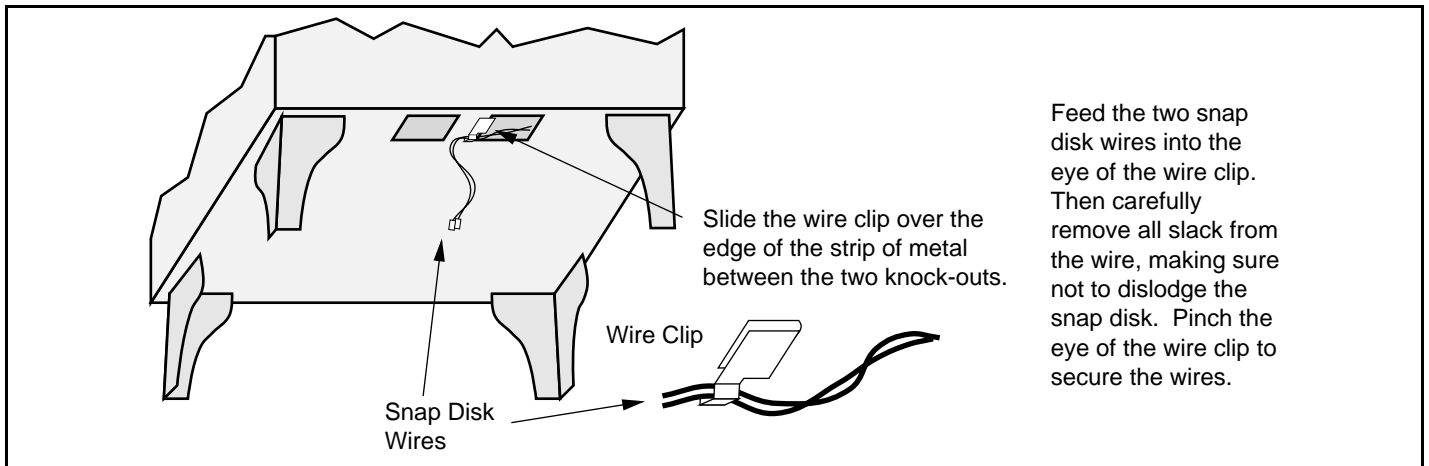


2. For the Endeavor, Liberty, and 1750, follow step 2B. For all other models, follow step 2A.

- 2A Install the snap disk assembly into the left side convection chamber following the directions below.

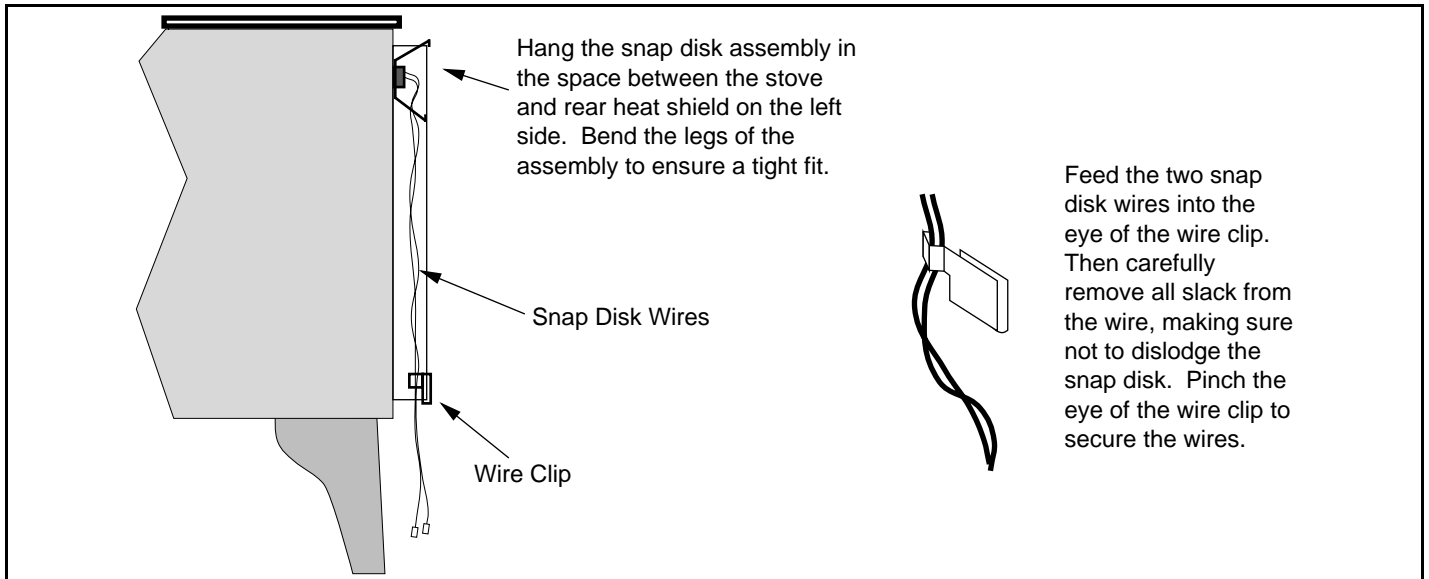


2A Secure the snap disk wires in place following the directions below. Go to step 3.



NOTE: The wires must be properly secured to prevent the wire from contacting the firebox and shorting out the blower circuit.

2B (Liberty, Endeavor, and 1750 only) Install the snap disk assembly inside of the heat shield following the directions below. Secure the snap disk wires in place following the directions below.



Secure the snap disk wires in place following the directions below.

NOTE: The wires must be properly secured to prevent the wire from contacting the firebox and shorting out the blower circuit.



3. Place the blower near the bottom rear edge of the stove. Attach the quick-connects from the snap disk assembly to the quick-connects on the blower. Push any slack wire into the blower box. Attach the blower following the directions below.

a

Endeavor & Liberty:
Feed the two wires from the blower through this hole before attaching the quick-connects.

All Other Models:
Feed the wires directly upwards

NOTE:
Prior to attaching the blower, tuck all excess wire into the area inside the blower.

b

Attach the quick-connects leading from the snap disk to the quick-connects from the blower.

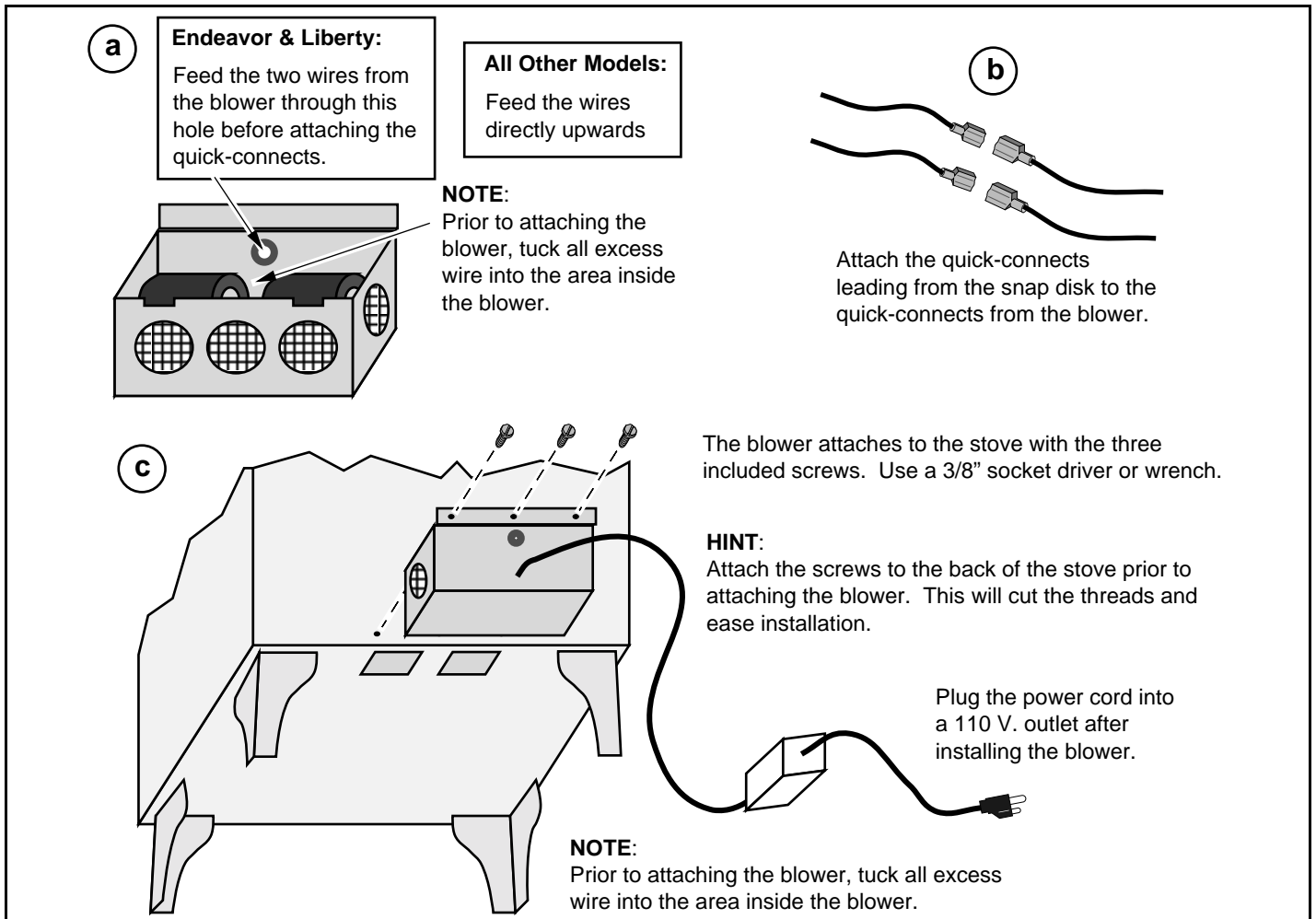
c

The blower attaches to the stove with the three included screws. Use a 3/8" socket driver or wrench.

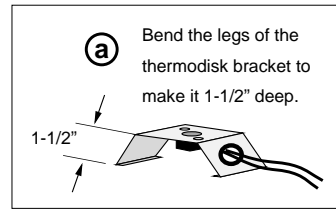
HINT:
Attach the screws to the back of the stove prior to attaching the blower. This will cut the threads and ease installation.

Plug the power cord into a 110 V. outlet after installing the blower.

NOTE:
Prior to attaching the blower, tuck all excess wire into the area inside the blower.



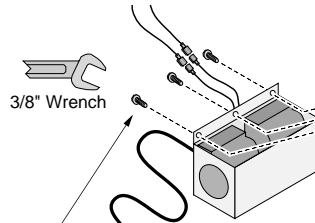
LEYDEN AND ARBOR INSTALLATION INSTRUCTIONS



(b) Tuck the thermodisk into place. It wedges between the rear heat shield and the cast iron firebox.

(c) Route the wires on the outside of the stove, behind the convection jacket.

(d) Route the wires from the blower through the hole in the back of the blower housing. Attach these wires to the thermodisk wires.

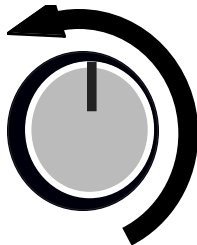


(f) Attach the blower to the stove with the three screws included with the blower.

(g) Plug the blower in. Do not route the power cord under or over the stove or in a location where it may become damaged.

OPERATION INSTRUCTIONS

The blower will not turn on until the appliance is up to temperature. Once up to temperature, the blower will operate at the speed determined by the position of the blower knob (see the illustration below). The blower shuts off once the appliance cools.



OFF
Turn the knob all the way counter-clockwise to turn off.



HIGH
Turn the knob clockwise from the off position until it clicks.



LOW
Turn the knob all the way clockwise to turn to low.

