

J. SEASONAL CHECKLIST

WARNING!

Children and adults should be alerted to the hazards of high surface temperatures and should stay away to avoid burns or clothing ignition. Young children should be carefully supervised when they are in the same room as the appliance.

CAUTION:

Any safety screen or guard removed for servicing an appliance must be replaced prior to operating this appliance.

Clothing or other flammable material should not be placed on or near the appliance.

Note: Installation and repair should be done by a qualified service person. The appliance should be inspected before use and at least annually by a qualified service person. More frequent cleaning may be required due to excessive lint from carpeting, bedding material, etc. It is imperative that control compartments, burners and circulating air passageways of the appliance be kept clean.

Before operating this appliance, have a qualified technician:

1. Review proper placement of logs, rock wool, and vermiculite.
2. Check wiring.
3. Check air shutter adjustment.
4. Ensure there are no gas leaks.
5. Inspect the venting system and damper device to ensure that the flow of combustion and ventilation air are not obstructed. Particular attention should be given to any deterioration of the damper or venting system due to corrosion or other sources of damage.

WARNING!

Keep the area near the appliance clear and free from combustible materials, gasoline and other flammable vapors and liquids.

1. INTERMITTENT PILOT IGNITION OPERATION

a. Lighting the Appliance During Regular Use

Turn the wall switch to "ON".

b. Shutdown During Regular Use

Turn the wall switch to "OFF".

c. Long Term Shutdown

- 1) Turn all wall switches to "OFF".
- 2) Turn the manual shutoff valve to "CLOSED".
- 3) To relight the appliance, see page 14.

The first name in fireplaces

The first name in fireplaces

2. FUEL CONVERSION INSTRUCTIONS

Natural or propane gas conversions necessary to meet the application need to be made by a qualified technician using Hearth & Home Technologies specified and approved parts.

In the vent your appliance must be converted to use propane, you must use a **DCKVP Conversion Kit**. To be converted to use natural gas, you must use a **DCKVN Conversion Kit**.

WARNING!

Do not use this appliance if any part has been under water. Immediately call a qualified service technician to inspect the appliance and to replace any part of the control system and any gas control which has been under water.

3. OPERATING THE OUTSIDE AIR KIT

The outside air kit is supplied as an optional feature with this appliance. The outside air kit helps decrease the amount of room air taken by utilizing outside air for combustion. It is strongly recommended that it be installed.

To operate the outside air kit, before starting the appliance: Grasp the small, black handle located on the left side of the appliance. See Figure 18. Lift the handle and move it up. When through burning the appliance, grasp the handle, move it down to close the outside air door.

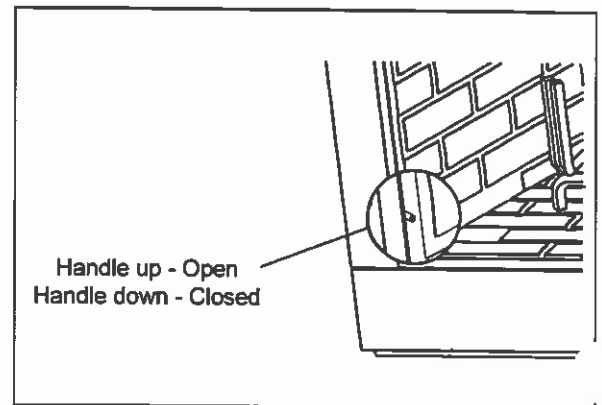


Figure 18 - Operating the Outside Air Kit and Circulating Air Passageway

K. START-UP ISSUES

ISSUE	SOLUTIONS
1. Condensation on the glass doors	1. This is a result of gas combustion and temperature variations. As the appliance warms, this condensation should disappear.
2. Blue flames	2. This is a result of normal operation and the flames will begin to yellow as the appliance is allowed to burn.
3. Odor from the appliance	3. When first operated, this appliance may release an odor for the first several hours. This is caused by the curing of the paint and the burning off of any oils remaining from manufacturing.
4. Film on the glass doors	4. This is a normal result of the curing process of the paint and logs. Glass doors should be cleaned within 4-6 hours of initial burning to remove deposits left by oils from the manufacturing process. A non-abrasive cleaner such as Brasso may be necessary.

WARNING!

Never use gasoline, gasoline-type lantern fuel, kerosene, charcoal lighter fluid or similar liquids in this appliance. Keep any flammable liquids a safe distance from the appliance.

L. MAINTENANCE INSTRUCTIONS

1. CLEANING THE BURNER AND CONTROL COMPARTMENT

Keep the burner and control compartment clean by brushing and vacuuming at least once a year. Always turn off the wall switch (or remote control) and gas valve before cleaning.

2. CHECKING THE VENT SYSTEM

Inspect the flame of the burner periodically, making sure the flames are steady, not lifting or floating. The flame color should be blue with yellow tips. The sensor tip should be covered with flame. See Figure 19.

If the vent configuration is installed incorrectly, the vent may cause the flames inside the appliance to lift or "ghost", a dangerous situation. Inspect the flames after installation to ensure proper performance. See Figure 20. If the vent configuration is correct, yet the flames are lifting or ghosting, shut off gas to the appliance and contact a qualified service technician.

Air Shutter Adjustment

To reduce the possibility of soot, we have equipped your appliance with two adjustable air shutters. See Figures 21 and 27. Your air shutter is provided in the closed position for natural gas.

Note: The look of the flames and embers may differ based on the type of fuel and venting assembly that is required.

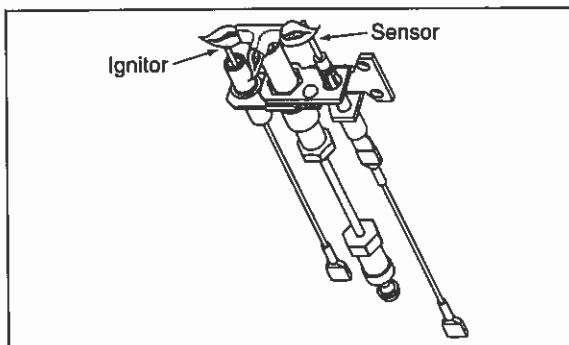


Figure 19 - Intermittent Pilot Ignition Assembly



Figure 20 - Flame Patterns

3. PROPER OPERATION OF OPTIONAL GLASS DOORS

While operating your appliance, you should either have the doors completely open or completely closed, but never partially open. See Figure 22.



Figure 21 - Air Shutter

WARNING!

Gas appliances equipped with doors should be operated only with doors fully open or doors fully closed. If doors are left partially open, gas and flame may be drawn out of the appliance opening, creating risks of both fire and spillage.

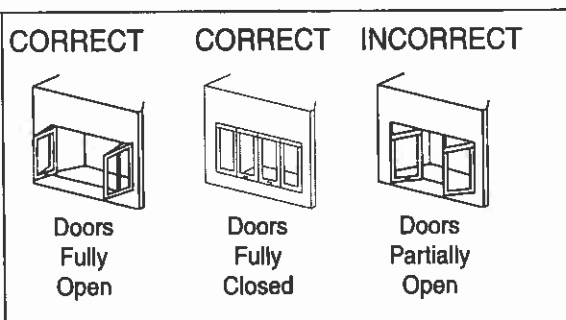


Figure 22 - Correct Operation of Doors

The first name in fireplaces

4. HIGH LIMIT SAFETY SWITCH

A limit switch has been installed on the IB75. This switch automatically turns off the appliance if it becomes too hot. If this happens, do not attempt to operate the appliance until it has been examined by a qualified service technician. The high limit switch is located in the center of the appliance and directly in front of the smoke shield. See Figure 23.

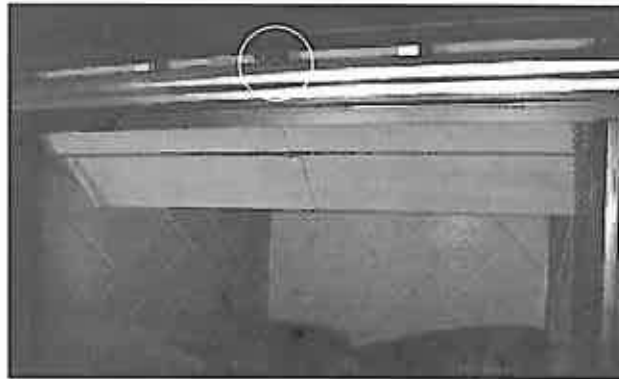


Figure 23 - Limit Switch Location

5. GLASS BREAKAGE/CLEANING

It is recommended to wear gloves while handling or removing glass. **DO NOT REMOVE GLASS WHEN IT IS HOT!**

- a. Clean glass after initial 4-6 hours burning time. This is to remove any film that develops from oils and log burn. After initial cleaning, clean as needed.
- b. Handle glass panel with care to avoid striking or scratching it on hard objects.
- c. To clean the glass, use a nonabrasive, mild cleaning solution (i.e. Brasso). Apply an adequate amount to the glass and wipe off per manufacturer's instructions. Contact your local stove shop or fireplace accessories store for further recommendations.
- d. In the event of glass breakage, carefully remove the glass frame. This will allow the removal of all glass fragments and sheet metal edge protection strips. Vacuum all remaining glass pieces with a shop vac. **DO NOT VACUUM IF PIECES ARE HOT!** Replace glass doors only with a Hearth & Home Technologies glass door assembly ordered through your local distributor/dealer. Never use substitute material. Only fully tempered soda lime safety glass may be used on this appliance.

Note: When cleaning the glass, NEVER use abrasive materials. NEVER clean glass when it is hot. Keep pets and children a safe distance away.

M. LOG REMOVAL/REPLACEMENT

1. Remove the lava rock from the appliance and save.
2. The top log is placed over the pins in the back log.
3. For removal of the front grate/log assembly remove two screws (one per side) from the hearth pan. See Figure 24. Pull up on the assembly to remove it from the firebox and set it aside, being careful not to damage any of the logs. See Figure 25.
4. To remove the back log, remove three screws and carefully lift the log off. See Figure 26.
5. Reverse the order to reinstall the logs.

Note: Be sure to place the burner tube onto the burner orifice as shown in Figure 27.



Figure 24
Unscrewing the Log/Grate Assembly
from the Hearth Pan



Figure 25
Log Removal

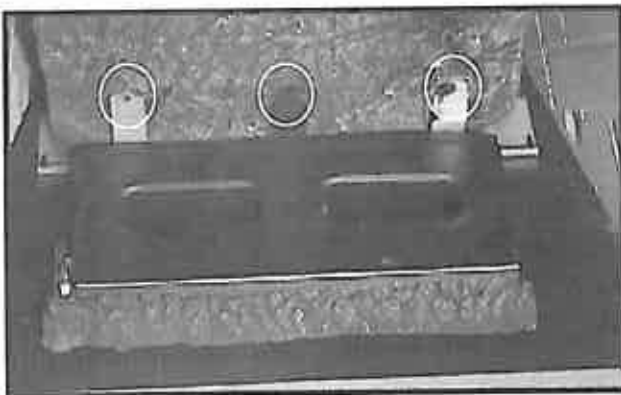


Figure 26
Back Log Removal

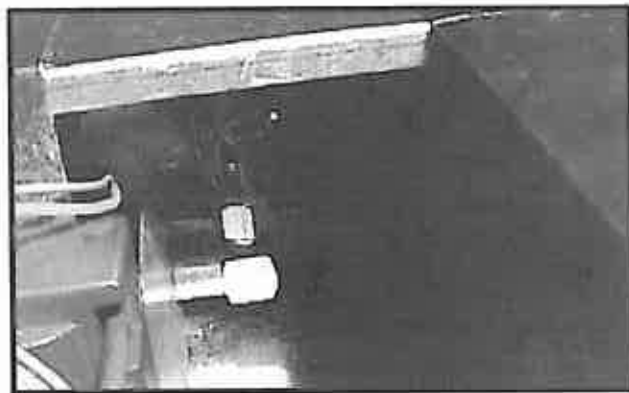
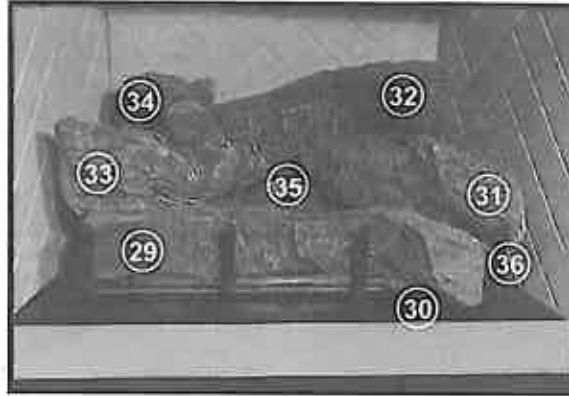


Figure 27
Air Shutter

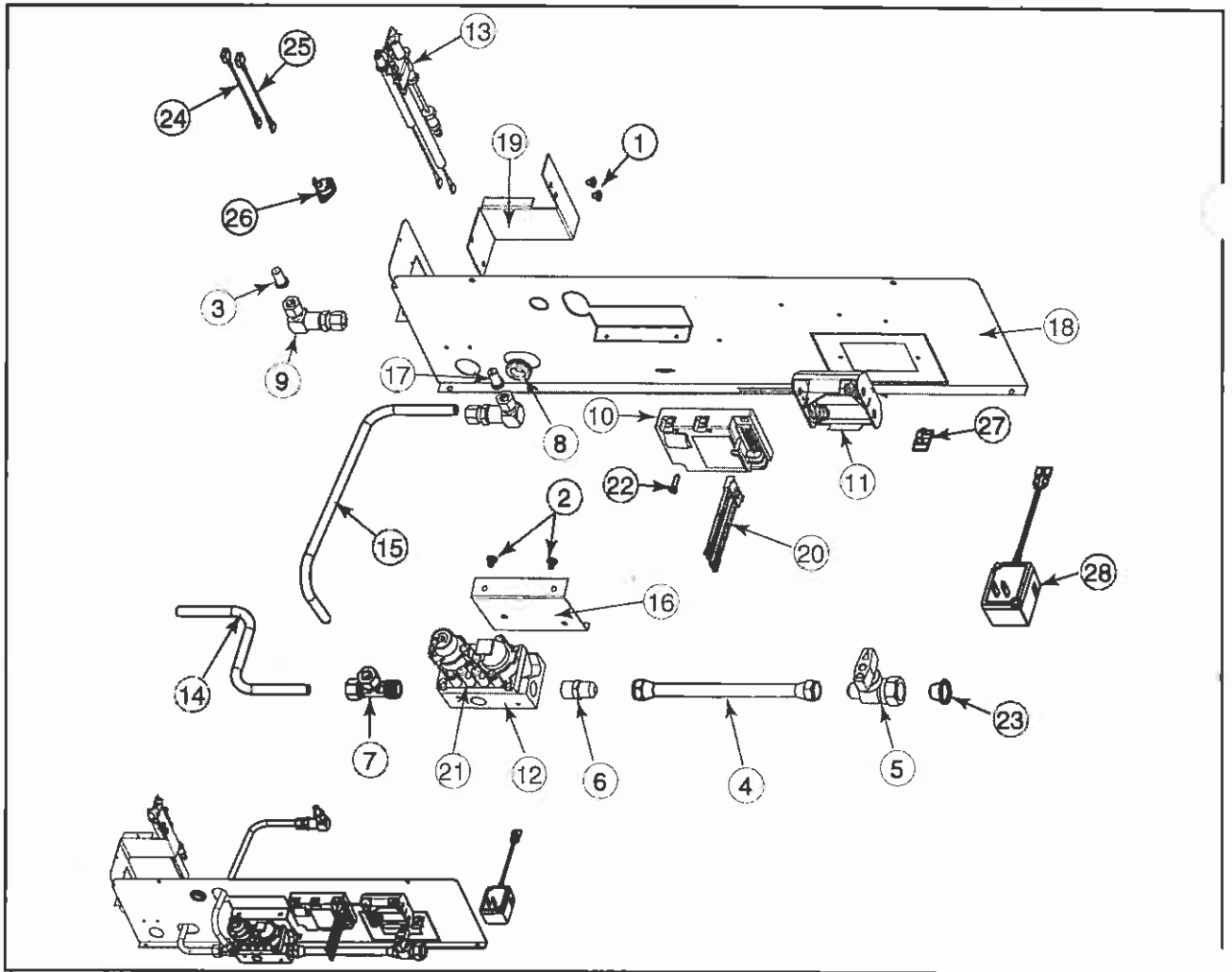
The first name in fireplaces

N. REPLACEMENT PARTS

Replacement parts are available from your distributor/dealer.



Gas Log Assembly



Valve Assembly

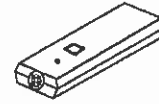
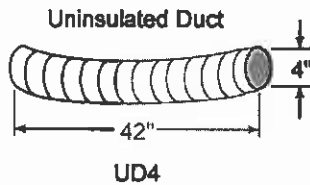
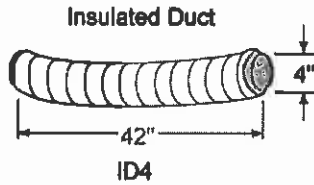
Visit our Website at www.heatilator.com for a dealer/distributor near you!

The first name in fireplaces

ITEM	PART #	DESCRIPTION	QTY.
1	12387	#10-32 x 3/16" Machine Screw	2
2	12388	#10-24 x 1/4" Machine Screw	2
3	13845	Orifice .056	1
4	15696	10" Flex Gas Line	1
5	15697	On/Off Valve	1
6	17069	Brass Fitting 3/8 NPT to 3/8 Flare	1
7	25059	Brass Fitting Tee	1
8	25741	Grommet	1
9	26457	Bulkhead	2
10	593-592	Ignition Control	1
11	593-594A	Battery Pack	1
12	750-500	Valve w/Regulator Nat	1
13	4021-005	IM Pilot Assy. Nat	1
14	34774	Front Gas Tube	1
15	34775	Rear Gas Tube	1
16	34776	Valve Bracket	1
17	34799	Orifice .129	1
18	34804	Valve Plate	1
19	4003-007	Pilot Bracket	1
20	593-590A	Wire Harness	1
21	35118	Vinyl Pull Plug	2
22	104079	#8 x 3/4" SMS PPHZ	2
23	23491	Dust Cap	1
24	33240	Wire Assembly HIBLU	1
25	33621	Wire Assembly HIBLK	1
26	34816	Limit Switch	1
27	14218	Cord Clip	1
28	593-593A	3v Adapter Plug	1
29	35055	Front Log	1
30	35053	Hearth Log	1
31	35050	Top Right Log	1
32	35052	Back Log	1
33	35054	Top Left Log	1
34	35057	Top Left Twig	1
35	35056	Middle Log	1
36	34813	Grate Assembly	1
N/S	35141	Burner Pan Assembly	1
N/S	35207	Automatic Damper	1
N/S	4003-002	Pilot Shield	1

The first name in fireplaces

O. OPTIONAL COMPONENTS

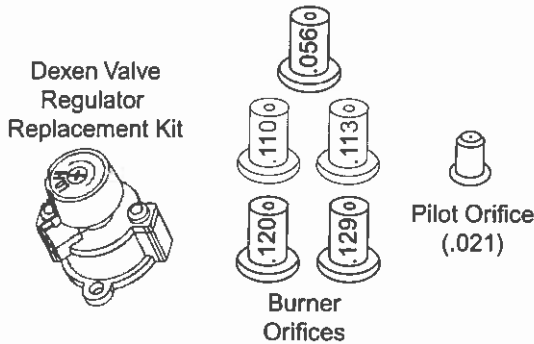


RC-SMART-HTL
Remote Control

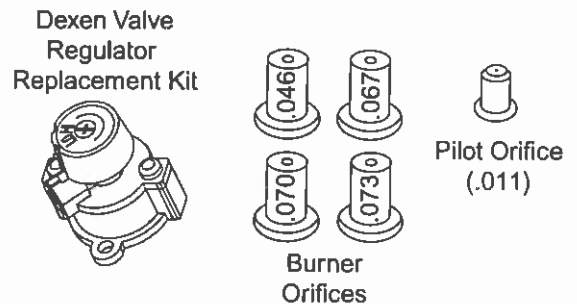
RCT-MLT-HTL
Multi-Function Remote Control

SMART-STAT-HTL
Remote Control with
Thermostat Control

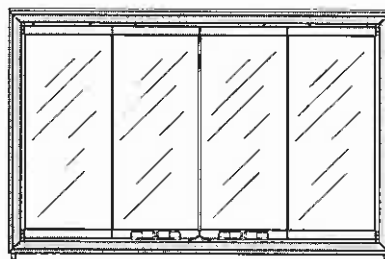
SMART-BATT-HTL
Battery-operated Remote Control
with Thermostat Control



**DCKVN Propane to
Natural Gas
Conversion Kit**



**DCKVP Natural to
Propane Gas
Conversion Kit**



AED75
Bi-fold Glass Doors

The first name in fireplaces

Index

A

Air Kit
 Installation 9
 Operation 16
 Air Shutter 17
 Air Shutter Adjustment 17
 Appliance Preparation 12
 Automatic Damper 8

B

BTUs 10

C

Certification 4
 Chase Installation 8
 Checklist 15
 Cleaning
 Burner & Control Compartment 17
 Cleaning Glass 18
 Clearances 4, 5, 6, 7
 Codes
 Electric 11
 Gas 4
 Combustible Finishing Material 12
 Combustible Material 6
 Conversion
 Gas 16
 Conversion Kit 16
 Conversion Kit. 10
 Conversion Kits 22
 Conversions
 Gas 10

E

Electric Codes 11

F

Finishing 12
 Firestop Spacer 7
 Flame
 Patterns 17
 Flames
 Blue 2, 16
 Framing 6, 7
 Fuel Conversion Instructions 16

G

Gas Codes 4
 Gas Conversion 16
 Gas Conversions 10
 Gas Line Connection 9
 Gas Pressure 10
 Glass
 Cleaning 18
 Condensation 2, 16
 Film 2, 16
 Glass Doors 17

H

High Altitude Installation 9
 High Limit Safety Switch 18
 High Surface Temperatures 15

I

Incoming Gas Line 9
 Inspection 15
 Insulation 7
 Intermittent Pilot Ignition
 Flame Patterns 17
 Operation 14, 15

J

Junction Box 11

L

Lava Rock 13
 Lighting Instructions 14
 Location and Clearances 5
 Log/Grate Assembly 19, 20
 Logs
 Removal/Replacement 19

M

Maintenance 17
 Mantel 12
 Minimum Heights 6

N

Nailing Flanges 6

O

Odor 2, 16
 Operation 14, 15
 Outside Air Kit
 Installation 9
 Operation 16

R

Rain, Caution 1
 Rock Wool 13

S

Sealant Material 12
 Space Requirements 5
 Start-up Issues 16

T

Termination Installation 8
 Testing
 Vent System 8
 Typical Installation 4

U

Utilities 9

V

Vent Lengths 7
 Vent System
 Checking 17
 Vermiculite 13
 Vertical Termination 8

W

Water 2, 16
 Website 20
 Wiring
 Ignition 11
 Wiring Diagram 11

The first name in fireplaces

heatilator®

The first name in fireplaces

Gas Appliance (Fireplace) Limited Lifetime Warranty

HEARTH & HOME TECHNOLOGIES INC. ("HHT") extends the following warranty for HEATILATOR® gas appliances installed in the United States of America or Canada (the "Appliance"). Dealers and employees of HHT have no authority to make any warranty or authorize any remedies in addition to or inconsistent with the terms of this warranty.

Limited Lifetime Warranty

HHT warrants the Appliance for component failure due to a manufacturing defect of any of the following components: combustion chamber, burner pan, and logs. The Limited Lifetime Warranty specified above is subject to the conditions, exclusions and limitations listed below, is for the period the Appliance is owned by the original homeowner only, and is nontransferable.

1 Year Limited Warranty

HHT warrants the Appliance to be free from failure of any of the following components for a period of one year after installation: valve, flexible gas line connector, glass panel, fan, direct vent chimney components, factory paint, gasket, piezo ignitor, thermopile, thermocouple, junction box, pilot assembly, shutoff valve, high limit switch, refractory liners, transformer, and control box. If the Heatilator Appliance is found to be defective in either material or workmanship within one year of the date of original installation, HHT will provide replacement parts at no charge and pay reasonable labor and freight costs, and is for the period of one year following the date of original installation of the Appliance.

Conditions, Exclusions, & Limitations of Liability

- A. Both the Limited Lifetime and 1 Year Limited Warranties supplied by HHT apply only while the Appliance is in its location of original installation. HHT's obligation under this warranty does not extend to damages resulting from (1) installation, operation or maintenance of the Appliance not in accordance with the Installation Instructions, Operating Instructions, and the Listing Agent Identification Label furnished with the Appliance; (2) installation which does not comply with local building codes; (3) shipping, improper handling, improper operation, abuse, misuse, accident or unworkmanlike repairs; (4) environmental conditions, inadequate ventilation or drafting caused by tight sealing construction of the structure, air handling devices such as exhaust fans or forced air furnaces, or other causes; (5) use of fuels other than those specified in the Operating Instructions; (6) installation or use of components not supplied with the Appliance or any other components not expressly authorized and approved by HHT; and/or (7) modification of the Appliance not expressly authorized and approved by HHT in writing. This warranty is limited to only the component parts manufactured or supplied by HHT.
- B. HHT's liability under both the Limited Lifetime Warranty and the 1 Year Limited Warranty is limited to the replacement and repair of defective components or workmanship during the applicable period. HHT may fully discharge all of its obligations under such warranties by repairing the defective component(s) or at HHT's discretion, providing replacement parts at no charge and paying reasonable labor and freight costs.
- C. **EXCEPT TO THE EXTENT PROVIDED BY LAW, HHT MAKES NO EXPRESS WARRANTIES OTHER THAN THE WARRANTY SPECIFIED HEREIN. THE DURATION OF ANY IMPLIED WARRANTY IS LIMITED TO DURATION OF THE WARRANTY SPECIFIED ABOVE.**
- D. Some states do not allow exclusions or limitations of incidental or consequential damages, so those limitations may not apply to you. This warranty gives you specific rights; you may also have other rights which vary from state to state.

How to Obtain Service

To obtain service under this warranty you must:

1. Send written notice of the claimed condition to Heatilator Technical Service Department, Hearth & Home Technologies, 1915 W. Saunders Street, Mt. Pleasant, Iowa 52641-1563. You may also register your claim online at www.heatilator.com/contact.asp.
2. Provide proof of purchase, model number, serial number, and manufacturing date code to HHT.
3. Provide HHT reasonable opportunity to investigate the claim, including reasonable opportunity to inspect the Appliance prior to any repair or replacement work and before the Appliance or any component of the Appliance has been removed from the place of original installation.
4. Obtain HHT's consent to any warranty work before the work is done.

ADDITIONAL INFORMATION: If you would like information on current HEATILATOR products or want to locate a dealer in your area, call 1-800-843-2848.

©2003 Heatilator® is a Registered Trademark of Hearth & Home Technologies Inc.