

**INSTALLATION INSTRUCTIONS FOR CONTEMPORARY CHASE TERMINATION
MODELS FTF8-CTDT AND FTF10-CTDT (63L45 AND 63L46)**

GENERAL INFORMATION

The CTDT terminations are designed to be used on locally fabricated chimney enclosures, referred to herein as a chase. A chase may house one or more chimney systems. The CTDT is available in two models, the FTF8-CTDT and FTF10-CTDT, to fit the FTF8 and FTF10 chimney components respectively. The CTDT terminations have an integral slip section with a maximum effective length of 10" (254 mm) and when installed per these instructions, and an effective chimney height of 6" (152 mm) above the chase for the FTF8-CTDT and 8" (203 mm) for the FTF10-CTDT.

APPROVALS AND LISTINGS

The CTDT terminations are tested as an integral component of the FTF8 and FTF10 chimney systems and may be used with any manufactured fireplace listed for use with FTF8 and FTF10 chimney components. The FTF8/10-CTDT terminations are listed for these applications by Warnock Hersey Inc.

Please retain this manual for future reference.

Model FTF8 and FTF10-CTDT Contemporary Chase Terminations

Chase Constructions

The chase is a hollow vertical enclosure framed as a part of the building and covered with a suitable exterior veneer. Consult local building codes for approved construction techniques.

Note: Combustible chase components must maintain a minimum clearance to the chimney sections above the roof-line. The minimum air spaces (clearances) must be the same as the chimney system to which it is installed. This information is specified on the chimney label and in the fireplace installation instructions.

The chase flashing, fabricated locally, is used to anchor the termination to the chase. The flashing should be a minimum 0.018" thick G90 galvanized steel or equivalent per ASTM 525. The flashing should be constructed to overlap the chase to seal out the elements.

Note: Failure to follow these instructions may cause a fire hazard.

To Install

Step 1. Construct the locally fabricated chase and chase flashing. Detail in *Figures 1 and 2* depict the minimum and maximum dimensions.

Step 2. Secure the flashing spacers to the top of the chase, using 8d nails, in the manner shown in *Figures 3 and 4*. (Spacers are shipped with the terminations.)

Step 3. Install the chimney sections to within 9" (229 mm) of the chase top for the FTF8-CTDT and 7" (178 mm) for the FTF10-CTDT.

Step 4. Secure the chase flashing (over previously mounted spacers) to chase with 8d nails.

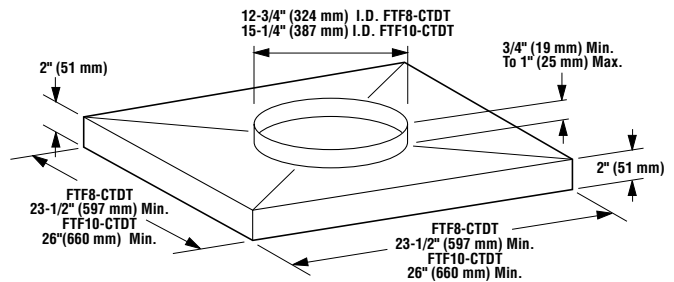


Figure 1

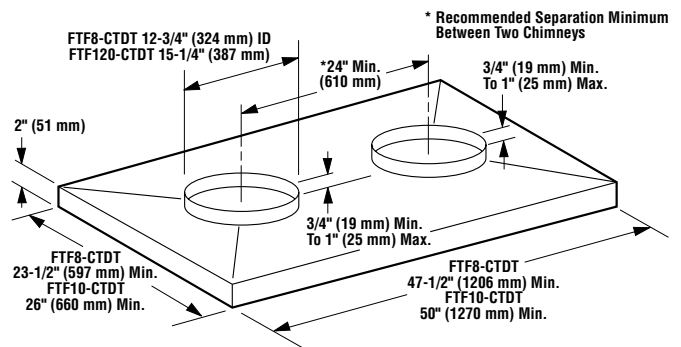


Figure 2

Step 5. Insert the termination down through the flashing collar and engage the inner flue section into the inner flue of the chimney. The outer slip section of the termination should engage inside of the outer pipe section. Make certain that the slip sections engage the chimney sections by a minimum of 1-1/2" (38 mm). The support tabs on the CTDT should rest securely on top of the flashing collar.



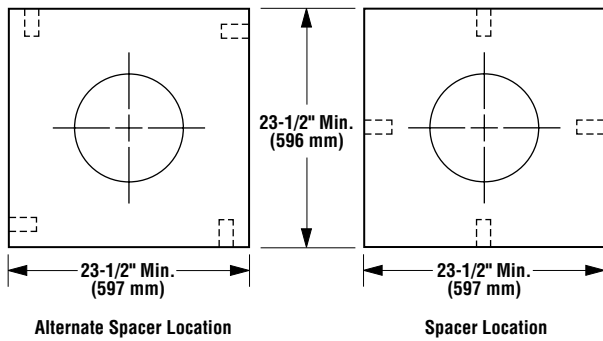


Figure 3

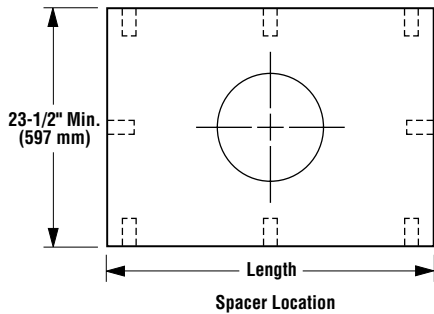


Figure 4

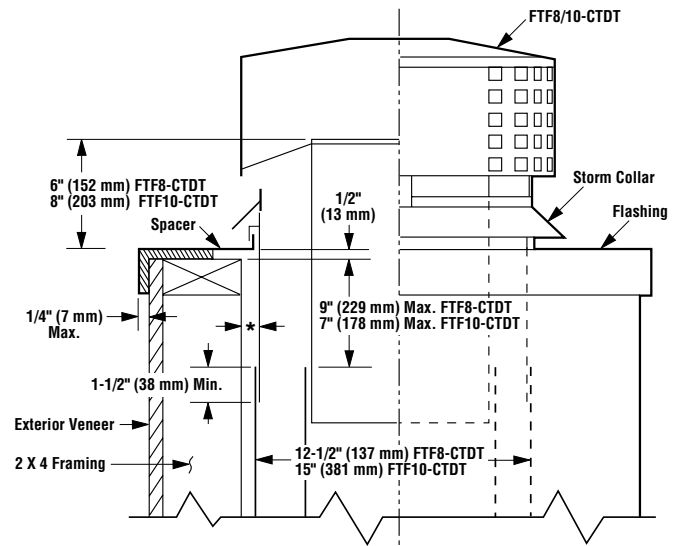
Step 6. Attach the appropriate storm collar around the chimney pipe directly above the chase flashing collar. Seal the storm collar to the pipe with a waterproof mastic. Refer to *Figure 5* for a visual relationship between components.

FIREPLACE CHIMNEYS TEN FOOT RULE SUMMARY

If the horizontal distance from the chimney edge to the peak to the roof is 10' (3 m) or less, the top of the chimney must be at least 2' (610 mm) above the peak of the roof (*Figure 6*).

If the horizontal distance from the chimney edge to the peak of the roof is greater than 10' (3 m), a chimney height reference point is established on the roof surface 10' (3 m) horizontally from the chimney edge. The top of the chimney must be 2' (610 mm) above this reference point. In all cases the chimney must terminate a minimum of 3' (914 mm) above the highest point of the roof opening.

The ten foot rule is necessary in the interest of safety and does not ensure smoke free operation. Tree, buildings, adjoining roof-lines, adverse wind conditions, etc., may require a taller chimney should a smoking problem exist.



***Note:** The minimum air spaces (clearances) must be the same as the chimney system to which it is attached. This information is specified on the chimney label and in the fireplace installation instructions.

Caution: Do not caulk or seal the flashing ventilating openings.

Figure 5

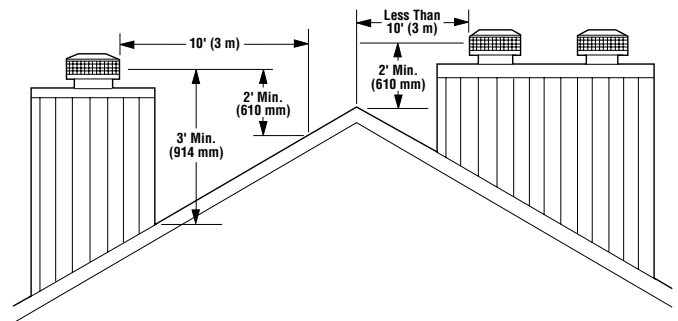
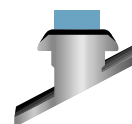


Figure 6

NOTE: DIAGRAMS & ILLUSTRATIONS NOT TO SCALE.

Security Chimneys International reserves the right to make changes at any time, without notice, in design, materials, specifications, prices and also to discontinue colors, styles and products. Consult your local distributor for fireplace code information.



**SECURITY CHIMNEYS
INTERNATIONAL**

Printed in U.S.A. © 2000 by SCI

P/N 750,014M REV. B 11/2003

1110 West Taft Avenue
Orange, CA 92865